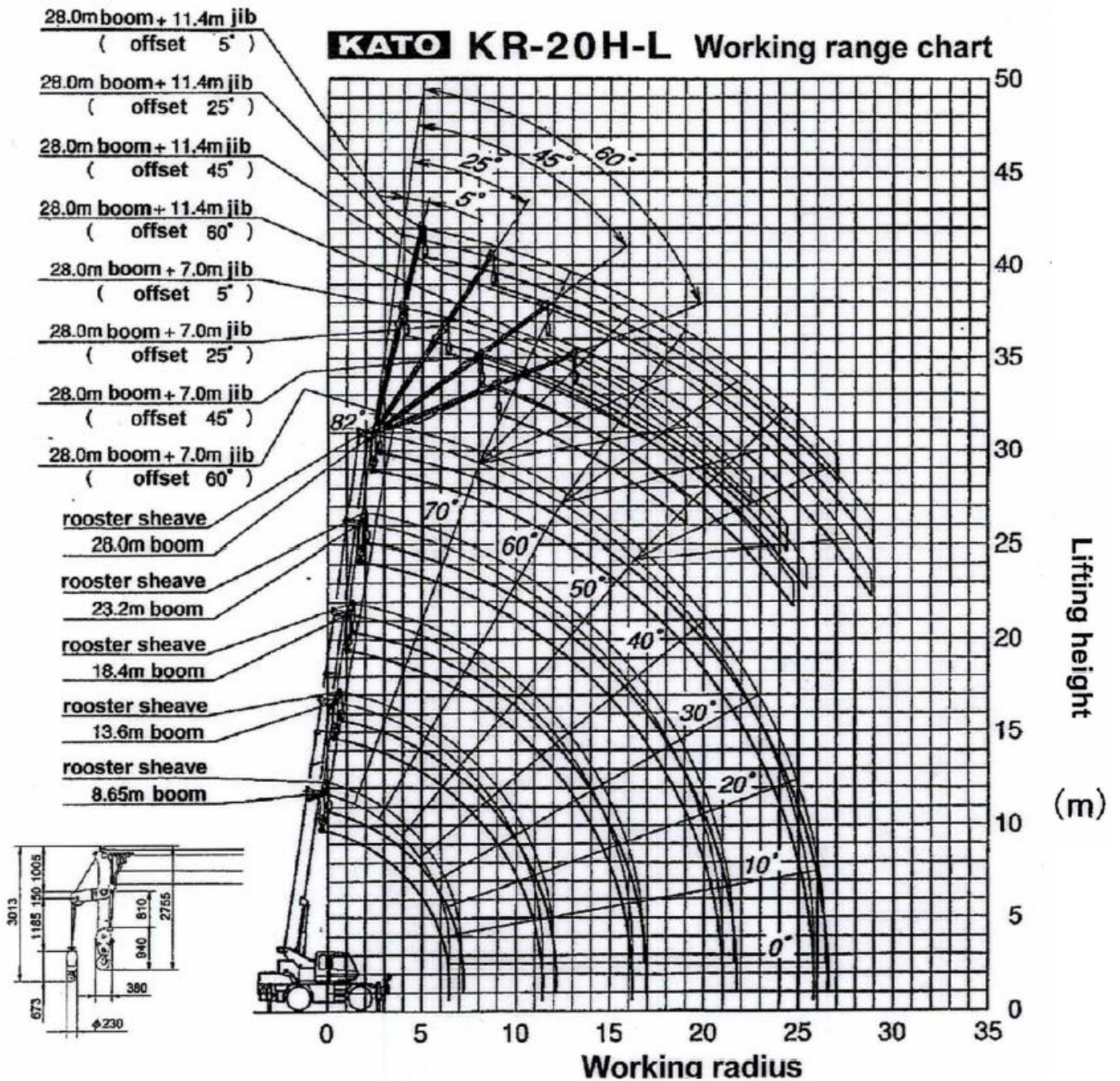


KATO KR-20H

20 TONNE HYDRAULIC SLEW CRANE



Range Diagram



KATO KR-20H-L ROUGH TERRAIN HYDRAULIC CRANE

CHART 2: 8.65m – 28.0m boom (outriggers + jib are used)

TOTAL RATED LOAD IN TONNES

2 8.0m Boom + 7.0 Jib

OUTRIGGERS AT MAXIMUM EXTENSION (5.4m) (360°)									OUTRIGGERS AT MEDIUM EXTENSION (4.7m) (OVER THE SIDE)								OUTRIGGERS AT MEDIUM EXTENSION (3.7m) (OVER THE SIDE)									
Boom Angle (°)	Offset 5°		Offset 25°		Offset 45°		Offset 60°		Boom Angle (°)	Offset 5°		Offset 25°		Offset 45°		Offset 60°		Boom Angle (°)	Offset 5°		Offset 25°		Offset 45°		Offset 60°	
	Working radius (m)	Load (ton)	Working radius (m)	Load (ton)	Working radius (m)	Load (ton)	Working radius (m)	Load (ton)		Working radius (m)	Load (ton)	Working radius (m)	Load (ton)	Working radius (m)	Load (ton)	Working radius (m)	Load (ton)		Working radius (m)	Load (ton)	Working radius (m)	Load (ton)	Working radius (m)	Load (ton)	Working radius (m)	Load (ton)
82	4.8	2.50	7.0	1.70	9.0	1.30	9.7	0.75	82	4.8	2.50	7.0	1.70	9.0	1.30	9.7	0.75	82	4.8	2.50	7.0	1.70	9.0	1.30	9.7	0.75
80	6.3	2.50	8.0	1.70	10.2	1.30	10.8	0.75	80	8.0	2.50	8.0	1.70	10.2	1.30	10.8	0.75	80	6.3	2.50	8.0	1.70	10.2	1.30	10.8	0.75
75	9.8	2.50	11.6	1.70	13.0	1.30	13.4	0.75	75	9.8	2.50	11.6	1.70	13.0	1.30	13.4	0.75	76	9.1	2.50	11.0	1.70	12.4	1.30	12.9	0.75
70	12.5	2.00	14.3	1.52	15.6	1.23	15.8	0.75	70	12.5	2.00	14.3	1.52	15.6	1.23	15.8	0.75	75	9.6	2.33	11.6	1.70	13.0	1.30	13.4	0.75
65	15.2	1.56	16.9	1.29	18.0	1.13	18.1	0.75	68	13.6	1.81	15.4	1.43	16.6	1.20	16.7	0.75	74	10.1	2.10	12.2	1.68	13.5	1.29	13.9	0.75
63	16.2	1.44	17.9	1.11	18.9	1.09	19.1	0.75	67	14.1	1.68	15.9	1.39	17.1	1.19	17.2	0.75	72	11.2	1.75	13.2	1.43	14.6	1.26	14.8	0.75
60.5	17.7	1.27	19.2	1.08	20.0	1.00			66	14.6	1.54	16.4	1.29	17.5	1.16	17.7	0.75	70	12.2	1.45	14.2	1.19	15.5	1.03	15.8	0.75
60	17.9	1.22	19.4	1.05	20.3	0.96			65	15.1	1.38	16.9	1.16	18.0	1.06	18.1	0.75	67	13.8	1.06	15.7	0.85	16.9	0.75	17.2	0.75
55	20.1	0.82	21.6	0.71	22.2	0.61			63	16.1	1.17	17.9	0.98	18.9	0.91	19.0	0.75	65	14.8	0.83	16.7	0.66	17.8	0.58	18.1	0.59
50	22.3	0.50	23.6	0.45	24.0	0.41			60	17.5	0.88	19.3	0.74	20.2	0.67			64	15.3	0.72	17.2	0.57	18.3	0.51	18.5	0.52
48	23.1	0.40	24.4	0.35	24.7	0.32			55	19.9	0.49	21.4	0.43	22.1	0.40			62	16.2	0.55	18.1	0.42	19.1	0.38		
45	24.5	0.26	25.5	0.24					53	20.8	0.37	22.2	0.33	22.9	0.29											
									51	21.7	0.26	23.0	0.23													
									50	22.2	0.20															
CRITICAL OOM ANGLE	43°		43°		46°		61°		CRITICAL OOM ANGLE	48°		49°		51°		61°		CRITICAL OOM ANGLE	60°		60°		60°		62°	
Standard Hook	3.2t hook		Hook Mass	60kg		Parts of Line		1	Standard Hook	3.2t hook		Hook Mass	60kg		Parts of Line		1	Standard Hook	3.2t hook		Hook Mass	60kg		Parts of Line		1

2 8.0m Boom + 11.4 Jib

OUTRIGGERS AT MAXIMUM EXTENSION (5.4m) (360°)									OUTRIGGERS AT MEDIUM EXTENSION (4.7m) (OVER THE SIDE)								OUTRIGGERS AT MEDIUM EXTENSION (3.7m) (OVER THE SIDE)									
Boom Angle (°)	Offset 5°		Offset 25°		Offset 45°		Offset 60°		Boom Angle (°)	Offset 5°		Offset 25°		Offset 45°		Offset 60°		Boom Angle (°)	Offset 5°		Offset 25°		Offset 45°		Offset 60°	
	Working radius (m)	Load (ton)	Working radius (m)	Load (ton)	Working radius (m)	Load (ton)	Working radius (m)	Load (ton)		Working radius (m)	Load (ton)	Working radius (m)	Load (ton)	Working radius (m)	Load (ton)	Working radius (m)	Load (ton)		Working radius (m)	Load (ton)	Working radius (m)	Load (ton)	Working radius (m)	Load (ton)	Working radius (m)	Load (ton)
82	6.0	1.50	9.5	0.90	12.7	0.75	13.9	0.45	82	6.0	1.50	9.5	0.90	12.7	0.75	13.9	0.45	82	6.0	1.50	9.5	0.90	12.7	0.75	13.9	0.45
80	7.6	1.50	11.2	0.90	13.9	0.75	14.9	0.45	80	7.6	1.50	11.2	0.90	13.9	0.75	14.9	0.45	80	7.6	1.50	11.2	0.90	13.9	0.75	14.9	0.45
75	11.3	1.50	14.5	0.89	16.9	0.74	17.5	0.45	75	11.3	1.50	14.5	0.89	16.9	0.74	17.5	0.45	75	11.3	1.50	14.5	0.89	16.9	0.74	17.5	0.45
70	14.6	1.31	17.4	0.82	19.6	0.71	20.2	0.45	70	14.6	1.31	17.4	0.82	19.6	0.71	20.2	0.45	72.5	13.0	1.44	16.1	0.85	18.3	0.73	18.9	0.45
65	17.7	1.11	20.3	0.77	22.1	0.68	22.5	0.45	65	17.8	1.08	20.3	0.77	22.1	0.68	22.5	0.45	70	14.5	1.12	17.4	0.82	19.6	0.71	20.2	0.45
60	20.7	0.94	23.1	0.72	24.6	0.66			64	18.3	1.00	20.9	0.75	22.7	0.67	23.0	0.45	69.5	14.8	1.07	17.9	0.81	19.8	0.70	20.5	0.45
58.5	21.6	0.83	24.0	0.71	25.3	0.65			63	18.9	0.92	21.5	0.73	23.2	0.66			66	16.8	0.70	19.7	0.55	21.6	0.47	22.1	0.45
55	23.4	0.61	25.6	0.54	26.5	0.51			60	20.4	0.69	23.0	0.55	24.5	0.49			65	17.4	0.61	20.2	0.49	22.0	0.41	22.5	0.41
49	26.2	0.32	28.2	0.28	28.9	0.27			55	23.0	0.37	25.4	0.29	26.5	0.25											
47	27.1	0.24	29.0	0.21					54	23.5	0.31	25.8	0.25	26.9	0.21											
CRITICAL OOM ANGLE	45°		45°		47°		63°		CRITICAL OOM ANGLE	52°		52°		52°		62°		CRITICAL OOM ANGLE	63°		63°		63°		63°	
Standard Hook	3.2t hook		Hook Mass	60kg		Parts of Line		1	Standard Hook	3.2t hook		Hook Mass	60kg		Parts of Line		1	Standard Hook	3.2t hook		Hook Mass	60kg		Parts of Line		1

