

FRANNA MAC-25+cwt

25 TONNE ALL TERRAIN MOBILE CRANE
with 2160kg extra counterweight



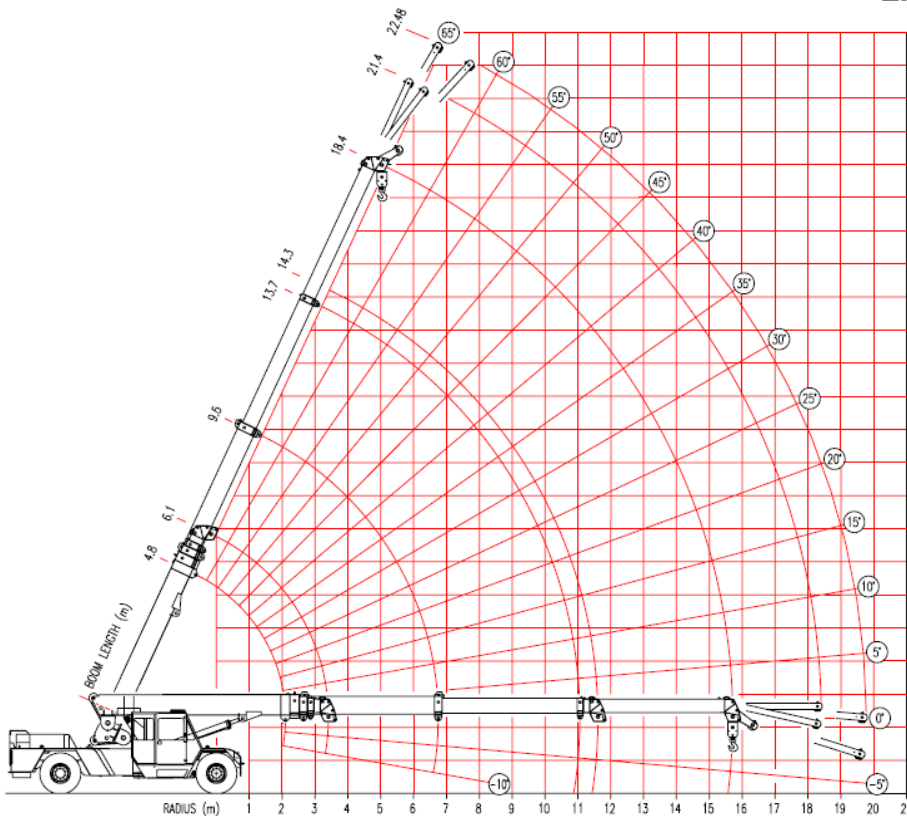
Range Diagram

ABN : 86 010 671 048
ACN : 010 671 048
E-Mail : info@terex.com.au
Internet : www.terex.com.au



TEREX | FRANNA

**LOAD CHART MXC1268-
MODEL: MAC 25 FULL POWER BOOM
STANDARD 1500kg COUNTERWEIGHT
+ EXTRA 2160kg COUNTERWEIGHT**



LIST OF DUTIES:

1500kg COUNTERWEIGHT ON FRONT

- 101 FALL BLOCK
- 102 RHINO HOOK
- 103 OFFSET HEAD - BOTTOM POSITION
- 104 OFFSET HEAD - TOP POSITION
- 105 3M FLYJIB - TOP POSITION - 0° OFFSET
- 106 3M FLYJIB - TOP POSITION - 12½° OFFSET
- 107 4M FLYJIB - TOP POSITION - 5° OFFSET
- 108 4M FLYJIB - BOTTOM POSITION - 17½° OFFSET
- 109 MAN BASKET
- 110 BUTT LUG
- 111 LUG 1 - BOOM 1
- 112 LUG 2 - BOOM 2

1500kg COUNTERWEIGHT ON REAR

- 201 FALL BLOCK
- 202 RHINO HOOK
- 203 OFFSET HEAD - BOTTOM POSITION
- 204 OFFSET HEAD - TOP POSITION
- 205 3M FLYJIB - TOP POSITION - 0° OFFSET
- 206 3M FLYJIB - TOP POSITION - 12½° OFFSET
- 207 4M FLYJIB - TOP POSITION - 5° OFFSET
- 208 4M FLYJIB - BOTTOM POSITION - 17½° OFFSET
- 209 MAN BASKET
- 210 BUTT LUG
- 211 LUG 1 - BOOM 1
- 212 LUG 2 - BOOM 2

1500kg COUNTERWEIGHT ON REAR

- PLUS EXTRA 2160kg COUNTERWEIGHT ON REAR
- 301 FALL BLOCK

MAC-25 FALL BLOCK LOAD CHART - 10 DEG. ART.

301

LMI DUTY

STANDARD 1500 KG COUNTERWEIGHT (PLMXF2009) + EXTRA 2160 KG COUNTERWEIGHT (PLMXF2019) ON REAR OF CRANE - SPRING LOCKOUTS ENGAGED

RC IN KILOGRAMS FOR SLEW ANGLES OF 10 DEGREES OR LESS EITHER SIDE OF STRAIGHT AHEAD (INDICATED BY GREEN LED ON DASH).

BOOM ANGLE - UNDEFLECTED (REF.)

RC ABOVE BOLD RED LINE ARE STRUCTURAL RC ARE BASED ON FIRM LEVEL GROUND (1% SLOPE (0.6 DEG) AS PER AS1418.5) WITH TYRES INFLATED AS PER NOTES

NOTE: VALUES IN BRACKETS () ARE ACTUAL RADIUS AT ZERO DEG. BOOM ANGLE.

LIFT & CARRY - THE RC SHALL BE CARRIED WITH THE MINIMUM BOOM LENGTH & AS CLOSE TO THE GROUND AS POSSIBLE AT SPEEDS NOT IN EXCESS OF 0.4 m/s (1.44 km/h)

RC ARE BASED ON 86.8% STABILITY & STRENGTH

Radius in Metres	BOOM PIVOT TO HEAD SHEAVES - THIRD BOOM RETRACTED (metres)																	THIRD BOOM EXTENDING (metres)									
	6.12	6.50	7.00	7.50	8.00	8.50	9.00	9.50	10.00	10.50	11.00	11.50	12.00	12.50	13.00	13.50	14.32	14.50	15.00	15.50	16.00	16.50	17.00	17.50	18.00	18.42	
1.4	25000	25000	25000	25000	25000	25000	25000	25000	25000																		
2.0	23400	23400	23350	23350	23350	23300	23300	23300	23250	22150	19300																
2.5	21450	21400	21350	21350	21300	21250	21250	21200	20450	17750	15550	14600															
3.0	17600	17600	17500	17500	17500	17450	17450	17400	17400	16500	14350	13500	13000	12600	12250												
3.5	15250	14850	14850	14800	14800	14750	14750	14750	14700	14700	13350	12600	12150	11750	11400	10850	10750										
4.0	13600	12800	12800	12800	12750	12750	12750	12700	12700	12700	12550	11750	11350	10950	10600	10100	10050	9850	9650								
5.0	11800	10400	9900	9900	9900	9900	9900	9900	9850	9850	9850	9850	9800	9650	9350	8900	8800	8650	8500	8400	8250	8150	8000	7900	7800	7700	7600
6.0	(4.3)	(4.8)	16	25	31	36	40	43	46	48	50	52	54	56	58	58	58	59	61	62	63	64	65	65	65	65	65
7.0																											
8.0																											
9.0																											
10																											
11																											
12																											
13																											
14																											
15																											
15.71																											

WINCH RC
SINGLE PART 4200
TWO PARTS 8400
FOUR PARTS 16800
SIX PARTS 25000

NOTE: WEIGHT OF HOOKS, BLOCKS & OTHER LOAD HANDLING DEVICES SHALL BE ADDED TO THE WEIGHT OF THE LOAD